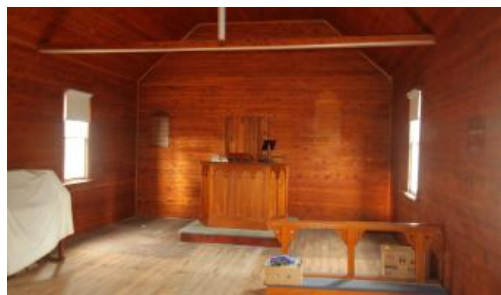


Sold



## UNITING CHURCH KINGSTOWN

Historic Uniting Church, erected in 1881 and set on 3/4 acre of land. Weatherboard walls, wooden floor and high pitched galvanised roof. In the 1920's the pine ceiling and a porch and vestry were added. An additional small shed – previously used as a Sunday School building is included.

The above information provided has been furnished to us by the vendor/s. We have not verified whether or not that information is accurate and do not have any belief in one way or the other in its accuracy. We do not accept any responsibility to any person for its accuracy and do no more than pass it on. All interested parties should make and rely upon their own inquiries in order to determine whether or not this information is in fact accurate.

1 1 2,979 m2

<b>Price</b>	SOLD
<b>Property Type</b>	Residential
<b>Property ID</b>	424
<b>Land Area</b>	2,979 m2

### Agent Details

Rod Eichorn – 0455110508

### Office Details

Uralla  
90 Bridge Street Uralla NSW 2358  
Australia  
02 6778 5000

